



APPENDIX 6-A

Conservation and Scenic Easements by Community

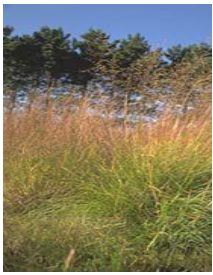
Washington County Conservation and Scenic Easement Inventory Summary December 2009					
Community	Easement Type			Conservation Easement Subtotals*	
	Scenic	Other Conservation	Total	Conservation Subdivisions**	All Other
	#	#	#	#	#
Afton	41	9	50	0	9
Bayport	0	1	1	1	0
Baytown Township	0	8	8	8	0
Cottage Grove	0	3	3	0	3
Denmark Township	4	8	12	6	2
Forest Lake	0	3	3	1	2
Grant	0	3	3	0	3
Hugo	0	2	2	0	2
Lake Elmo	0	38	38	36	2
Mahtomedi	0	1	1	0	1
Marine on St. Croix	0	9	9	4	5
May Township	116	10	126	2	8
Oakdale	0	2	2	0	2
Scandia	75	10	85	5	5
Stillwater***	1	128	129	0	128
Stillwater Township	56	11	67	2	9
Woodbury	1	4	5	0	4
Total	294	250	544	65	185

* This data separates the conservation easements into the number that are associated with open space developments and all others.

** Conservation subdivisions contain conservation easements that permanently protect large blocks of open space within the subdivision plat.

*** City of Stillwater holds conservation easements that are approximately 10 feet deep and run along the water's edge of 125 lots in the Liberty on the Lake and Legends subdivisions.

Source: Washington County property records database administered by and the recorded documents on file with the Department of Property Records and Taxpayer Services.



APPENDIX 6-B

Conservation and Scenic Easements by Holder

Washington County Conservation and Scenic Easement Inventory Summary December 2009								
Primary Easement Holder*	Easement Type						Conservation Easement Subtotals	
	Scenic		Conservation		Total		Conservation Subdivisions**	All Other
	#	acres	#	acres	#	acres	#	#
Federal Government	244.00	1,546.72			244.00	1,546.72	0.00	0.00
State of Minnesota	12.00	74.61	12.00	347.45	24.00	422.06	1.00	11.00
Washington County	3.00	64.58	10.00	268.41	13.00	332.99	5.00	5.00
Watershed District			10.00	67.09	10.00	67.09	0.00	10.00
Local Community***	34.00	201.47	166.00	831.84	200.00	1,033.31	29.00	137.00
MN Land Trust			48.00	2,923.15	48.00	2,923.15	29.00	21.00
Other	1.00	0.61	2.00	39.93	3.00	40.54	1.00	1.00
Total	294.00	1,887.99	248.00	4,477.87	542.00	6,365.86	65.00	185.00

* Many easements have multiple holders. This data only reports the easements by the primary holder.

** Conservation subdivisions contain conservation easements that permanently protect large blocks of open space within the subdivision plat.

*** City of Stillwater holds conservation easements that are approximately 10 feet deep and run along the water's edge of 125 lots in the Liberty on the Lake and Legends subdivisions.

Source: Washington County property records data base administered by and the recorded documents on file with the Department of Property Records and Taxpayer Services.